

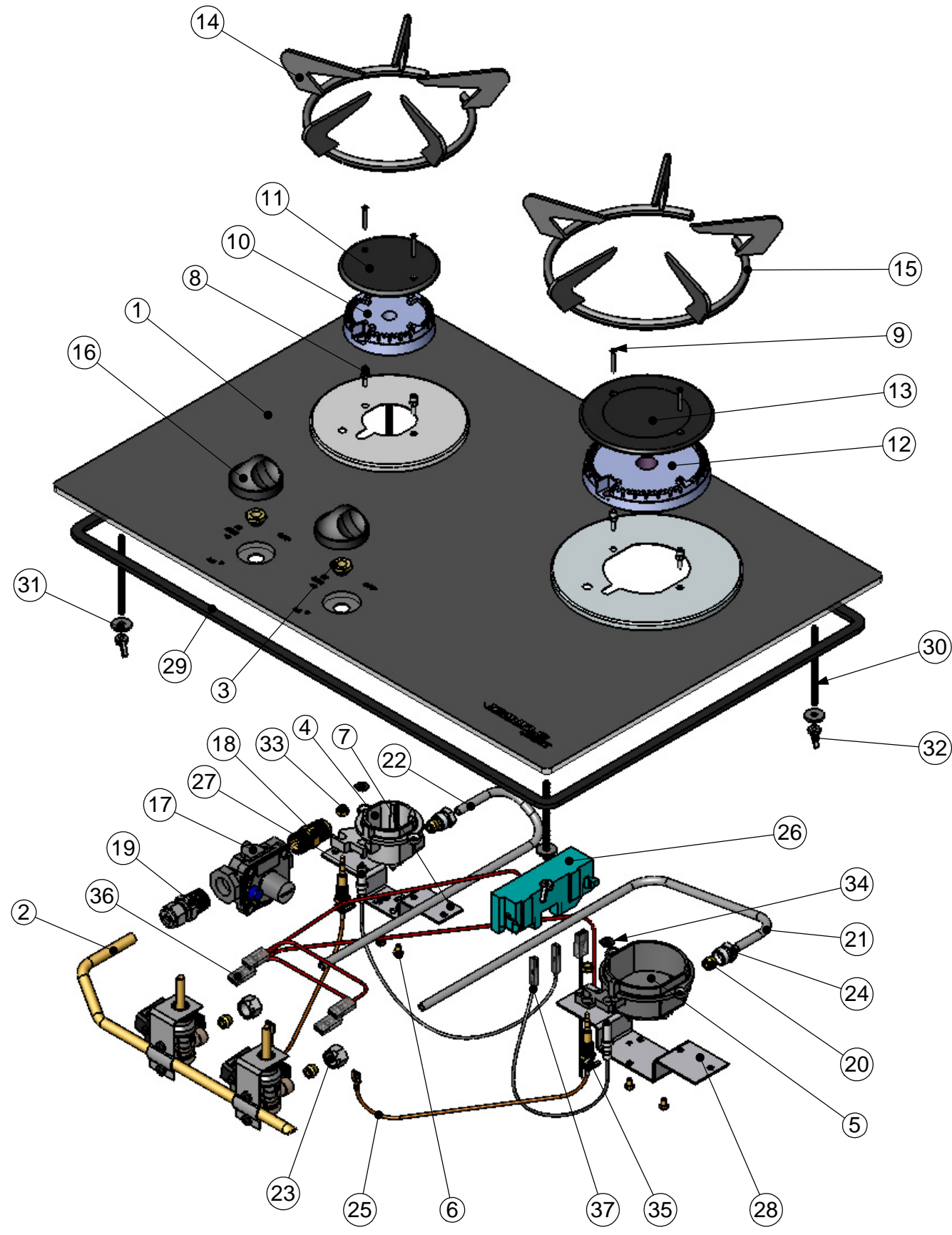
| GEOMETRIC TOLERANCE SYMBOLS | |
|-----------------------------|---------------|
| Position | Concentricity |
| Symmetry | Run out |
| Profile of a surface | Parallelism |
| Squareness | Angularity |
| Profile of a line | |

GENERAL TOLERANCES
 Tolerances unless otherwise stated:-
 No decimal place ±0.5mm
 One decimal place ±0.2mm
 Two decimal places ±0.1mm
 Angles ±1°
 Pierced holes ±0.1mm

IMPORTANT
 On receipt of a new drawing all previous issues must be destroyed.
 This drawing contains confidential information and is the property of SPINFLO LTD without whose permission it may not be copied or handed to a third party or otherwise used.

8 7 6 5 4 3 2 1

ALL DIMENSIONS IN MM UNLESS OTHERWISE STATED. DO NOT SCALE - IF IN DOUBT ASK



| ITEM NO. | PART NUMBER | DESCRIPTION | QTY. |
|----------|-------------|--------------------------------------|------|
| 1 | MAO1960.BK | ASSEMBLY, HOB TOP, SERIES 920, BLACK | 1 |
| 2 | MAC1220 | TAP ASSEMBLY, SERIES 920 HOB | 1 |
| 3 | PCC0742 | SLEEVE NUT, M11 x 1 | 2 |
| 4 | PCC0796 | BURNER CUP, SEMI-RAPID (0.67) | 1 |
| 5 | PCC0800 | BURNER CUP, RAPID (0.81) | 1 |
| 6 | PCX0100 | SCREW, M3.5x6, TAPTITE | 6 |
| 7 | MCC9427 | BURNER CLAMP, HB9, SEMI RAPID | 1 |
| 8 | PCC0814 | STUD, FIXED BURNER | 4 |
| 9 | PCC0815 | SCREW, M3 BURNER CAP | 4 |
| 10 | PCC0811 | FLAME SPREADER, SR2 SEMI RAPID | 1 |
| 11 | PCC0813 | BURNER CAP, SEMI RAPID, S2 | 1 |
| 12 | PCC0831 | FLAME SPREADER, SR2 RAPID | 1 |
| 13 | PCC0833 | BURNER CAP, RAPID, S2 | 1 |
| 14 | PCC0697.BK | PAN SUPPORT, CLIP ON, SEMI RAPID | 1 |
| 15 | PCC0698.BK | PAN SUPPORT, CLIP ON, RAPID | 1 |
| 16 | PCC0619.BK | KNOB, CONTROL, 2020 STYLE, BLACK | 2 |
| 17 | PCC1850 | MINI GAS REGULATOR, 25-35 M/BAR | 1 |
| 18 | PCC1855 | CONNECTOR, FLARED, 3/8"NPT-3/8"NPT | 1 |
| 19 | PCC1857 | COUPLING, MALE STUD, OD8MM- 3/8" NPT | 1 |
| 20 | PCO0166 | REDUCING OLIVE, BRASS 6MM | 4 |
| 21 | MCC9227 | PIPE, TAP - BURNER, R/H RAPID | 1 |
| 22 | MCC9225 | PIPE, TAP - BURNER, L/H, SEMI RAPID | 1 |
| 23 | PCO0190 | NUT, COMPRESSION 6MM | 2 |
| 24 | PCO0165 | NUT, MALE 6-8MM | 2 |
| 25 | PCC1130 | THERMOCOUPLE, 250MM, FASTON | 2 |
| 26 | PCC1392 | GENERATOR, 12V 2 OUTPUT,UBZ2 | 1 |
| 27 | PCC1453 | ELECTRODE, SPARK, 300MM S2 | 2 |
| 28 | MCC9433 | BURNER CLAMP, HB9, RAPID | 1 |
| 29 | PCC1000 | SEALING TAPE, 10MMx4MMx2.1M, BLACK | 1 |
| 30 | PCX0333 | STUD, THREADED, M4x70MM | 4 |
| 31 | PCX0186 | WASHER, 15ODx5IDx2MM BZP | 4 |
| 32 | PCX0332 | WINGNUT, M4, BZP | 4 |
| 33 | PCX0163 | LOCKNUT, M6, BRASS | 2 |
| 34 | PCC1499 | GASKET, ELECTRODE | 2 |
| 35 | PCC1498 | CLIP, FIXING, ELECTRODE | 2 |
| 36 | MAC0021 | WIRE KIT, SPARK IGNITION | 1 |

PACKAGING:- PCP1015 (TBC)
 INSTRUCTIONS:- PCC1272Y

| Date | Revision | Mod By | Issue No |
|---------------|----------|--------|----------|
| MODIFICATIONS | | | |

COUNTRY LEISURE SPINFLO
KITCHEN EQUIPMENT FOR THE LEISURE INDUSTRY
 19 OAKHAM DRIVE, SHEFFIELD, S3 9QX, ENGLAND
 Tel: +44 0114 273 8157
 Fax: +44 0114 275 3094

| | | | | |
|---|----------------|-------------|------------------|--------------|
| DRAWN BY: S. JENKINS | DATE: 03.09.07 | CHECKED BY: | SCALE: N.T.S | SHEET 1 OF 1 |
| MATERIAL: N/A | THICKNESS: N/A | | FINISH: N/A | |
| TITLE: ASSEMBLY, 920 SERIES HOB, 520x355,1:1BFI | | | DRG No: HB92090Y | |