

IMPORTANT INFORMATION

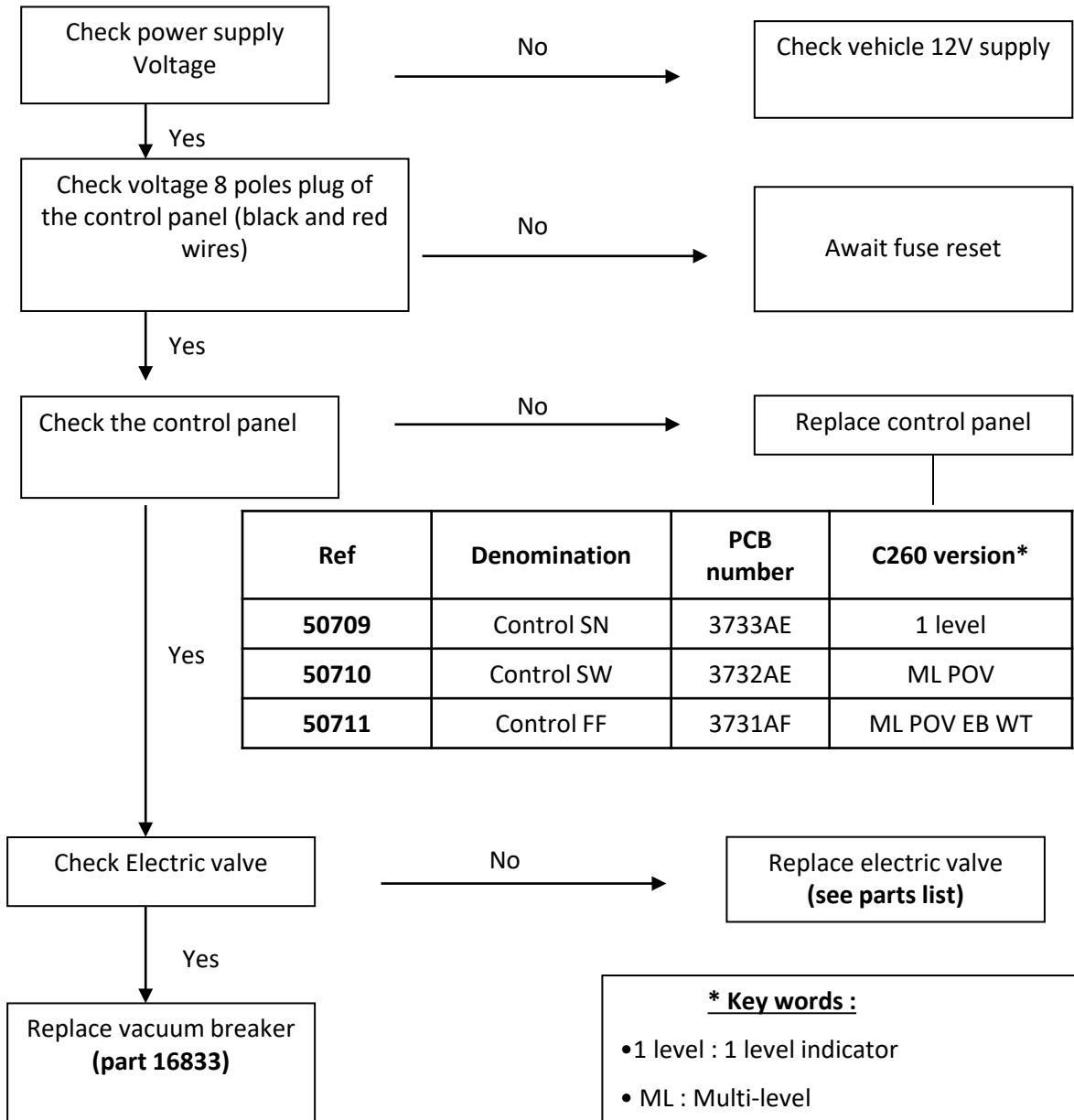
DISCLAIMER

Thetford recommends and strongly advises users to engage the services of a qualified and licensed professional for the installation, maintenance, repair, or any other servicing needs associated with the product. The user understands and assumes full responsibility for hiring a professional with the requisite skills, knowledge, and qualifications to service your product. This includes, but is not limited to, tasks such as installation, repairs, modifications, or any other service required. Thetford disclaims any and all liability for any damages, losses, injuries, or other adverse consequences that may result from the user's failure to hire a qualified professional for the servicing of your product. The user acknowledges the importance of ensuring that the hired professional adheres to industry standards, guidelines, and local regulations applicable to the servicing of your product. Thetford is not responsible for the actions, omissions, or negligence of the hired professional. The user agrees to indemnify and hold harmless Thetford from any claims, liabilities, damages, costs, or expenses, including legal fees, arising from the user's decision to hire, or not hire, a professional for the servicing of the product. By using your product, the user affirms that they have read, understood, and voluntarily agreed to this disclaimer.

No flush C263



Check the well functioning of the pump



Ref	Denomination	PCB number	C260 version*
50709	Control SN	3733AE	1 level
50710	Control SW	3732AE	ML POV
50711	Control FF	3731AF	ML POV EB WT

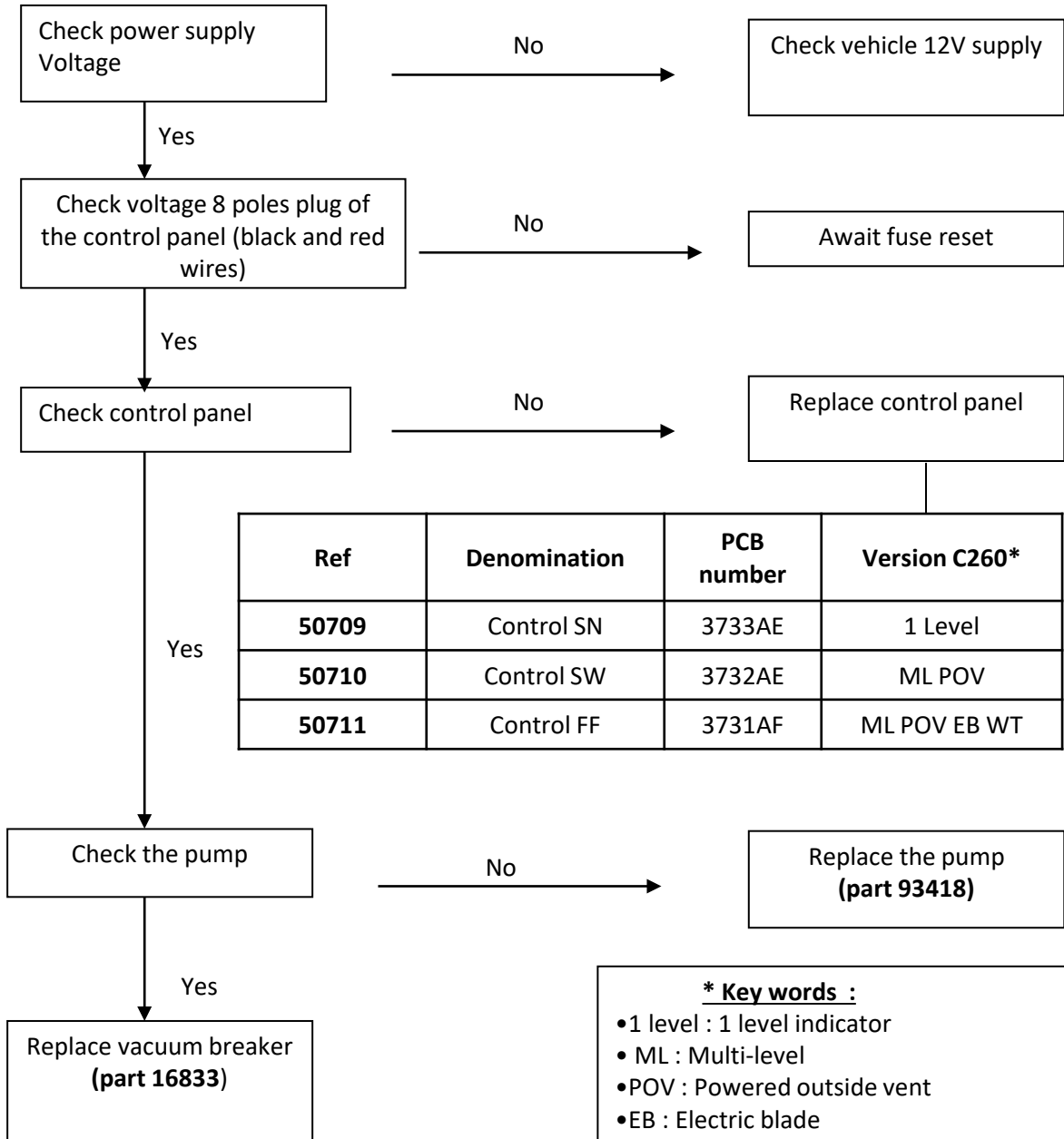
* Key words :

- 1 level : 1 level indicator
- ML : Multi-level
- POV : Powered outside vent
- EB : Electric blade
- WT : Waste transfer

No flush C262CWE



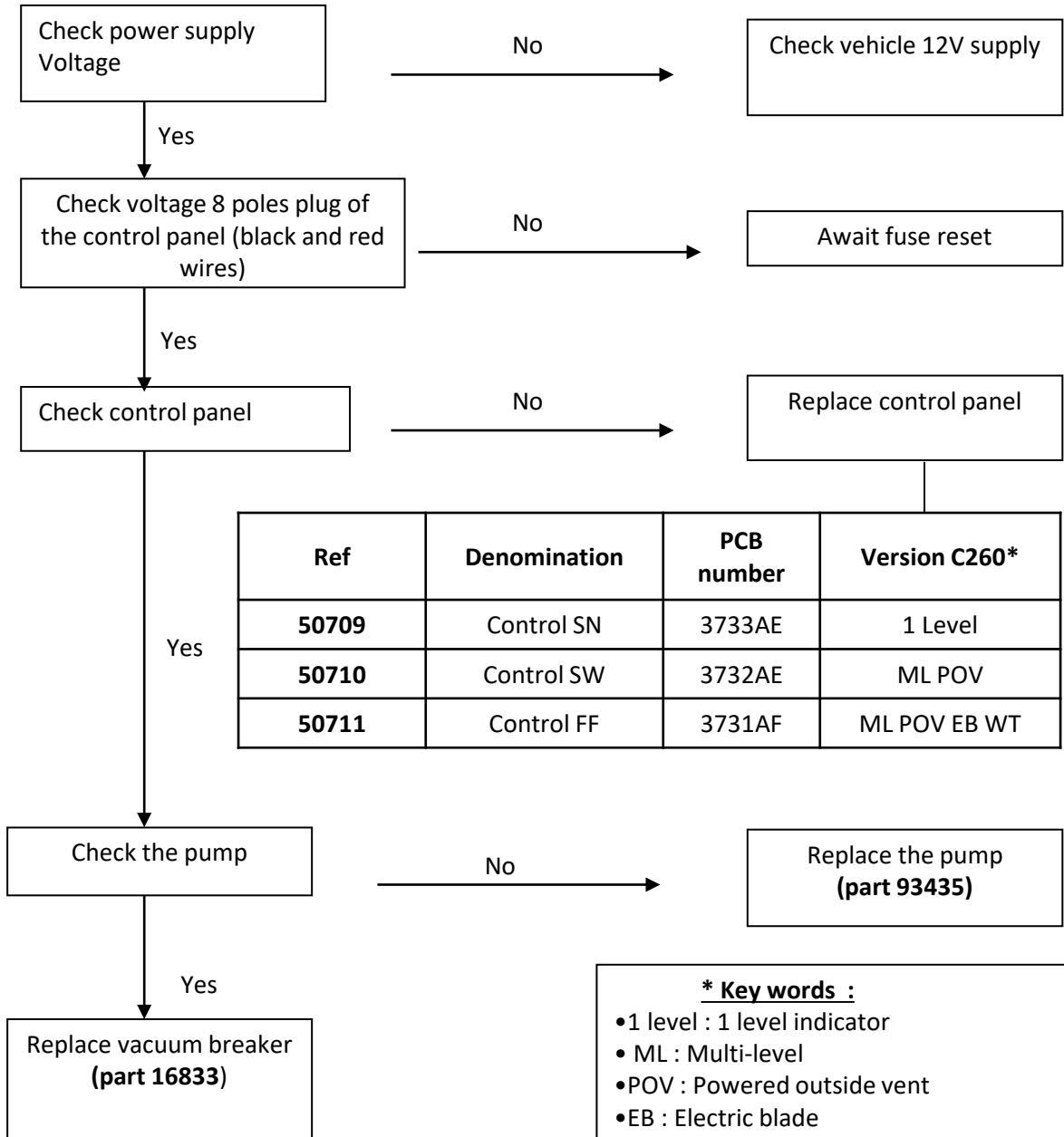
Check the well functioning of the pump



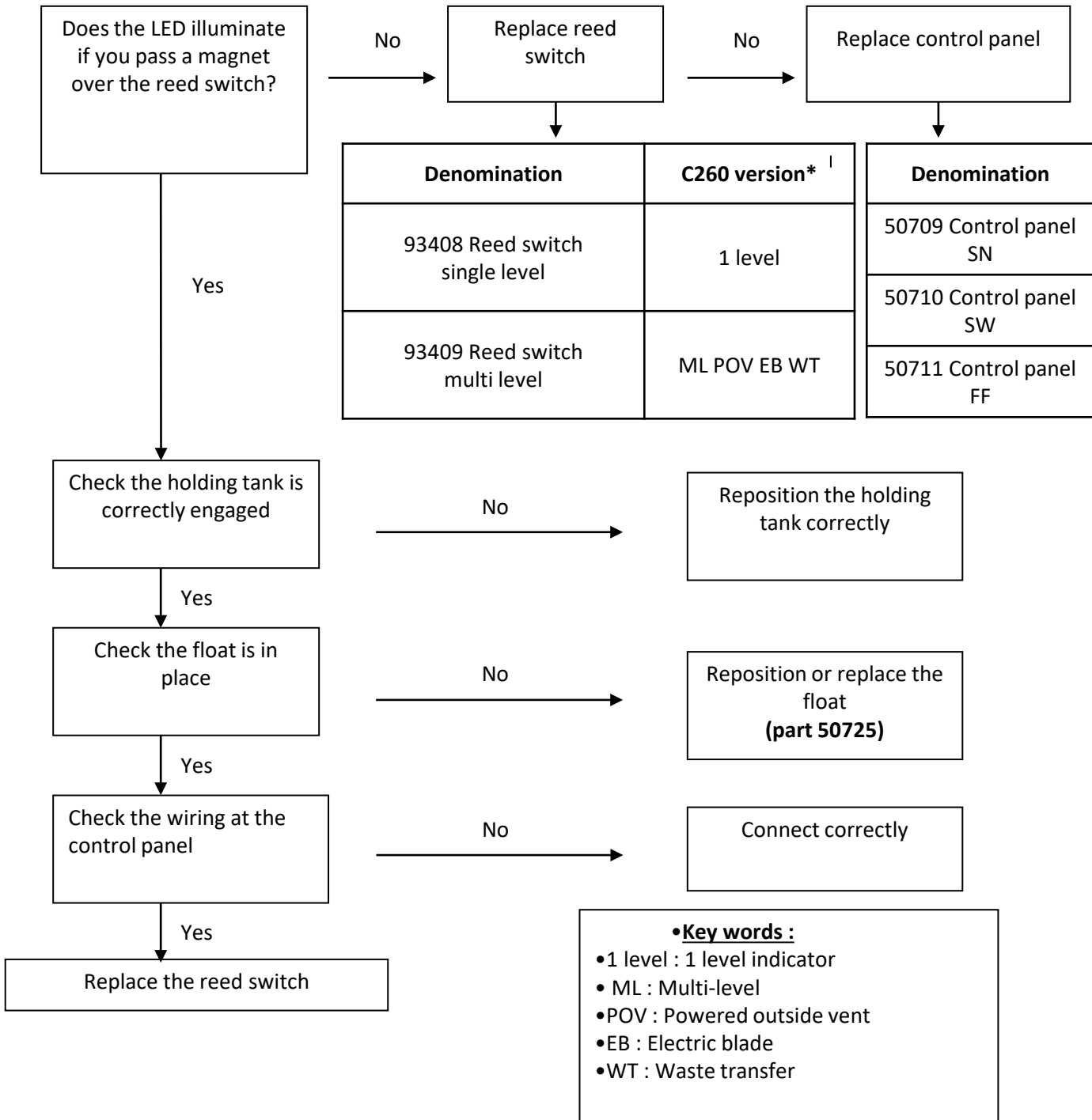
No flush C262SWE (toilet with separate flush tank)



Check the well functioning of the pump

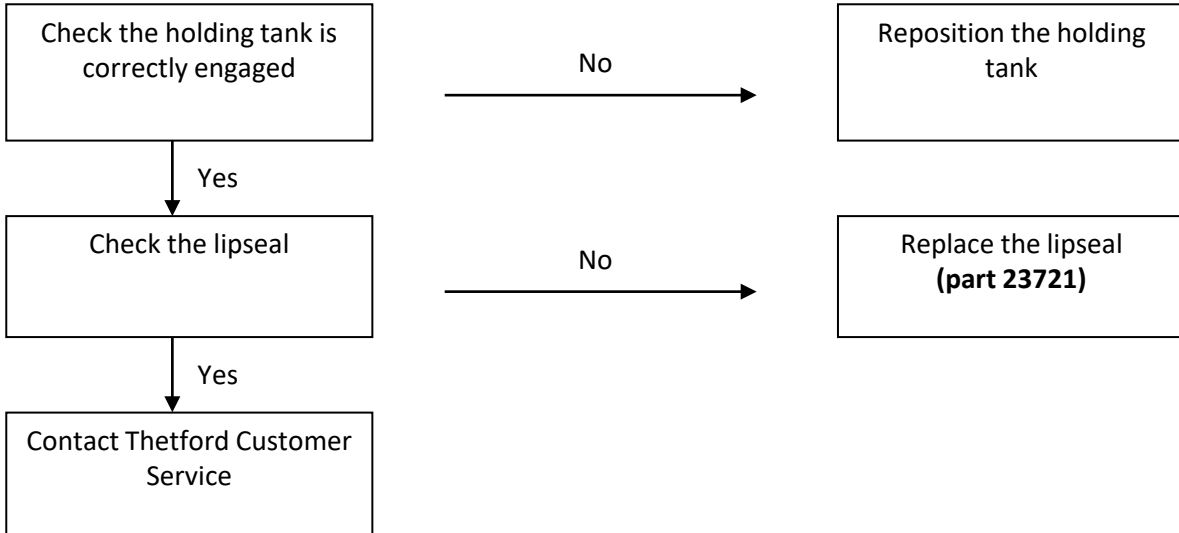


No level indication Holding tank C260



Leakages

➤ Leak between the bowl and the holding tank



➤ Leakage on the holding tank

▪ Leak at the vent button

Replace the vent button
(part 0752492)

▪ Leak at the pour out spout

Replace the pour out
spout
(part 5071992)

▪ Leak at the blade of the holding tank

Replace the lipseal
(part 23721)