

THETFORD

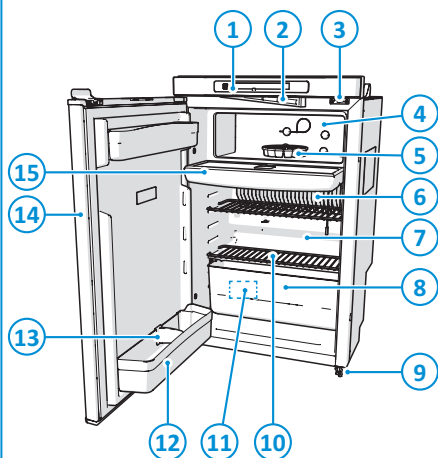


USER MANUAL

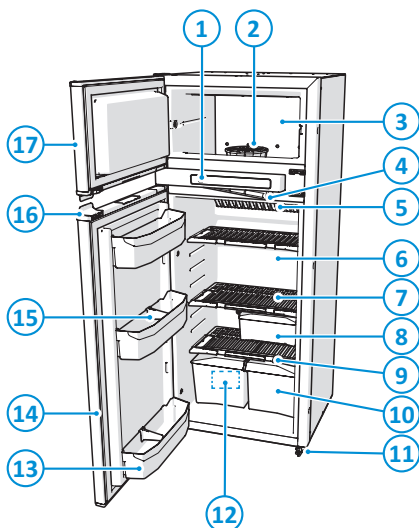
Refrigerator

N4000 series

1 Model A

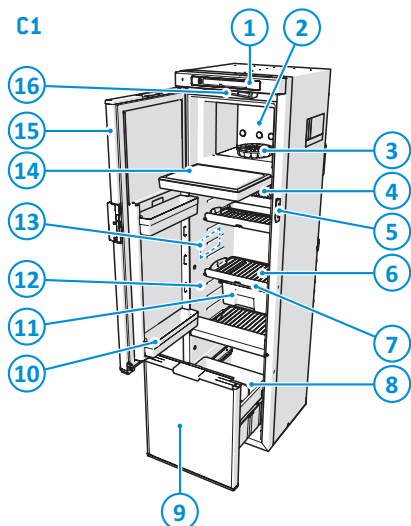


2 Model B

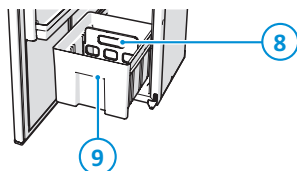


3 Model C1 and C2

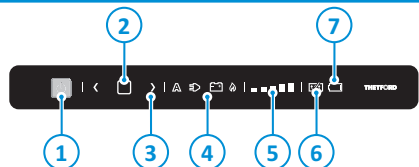
C1



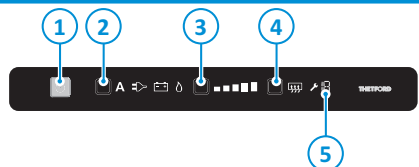
C2

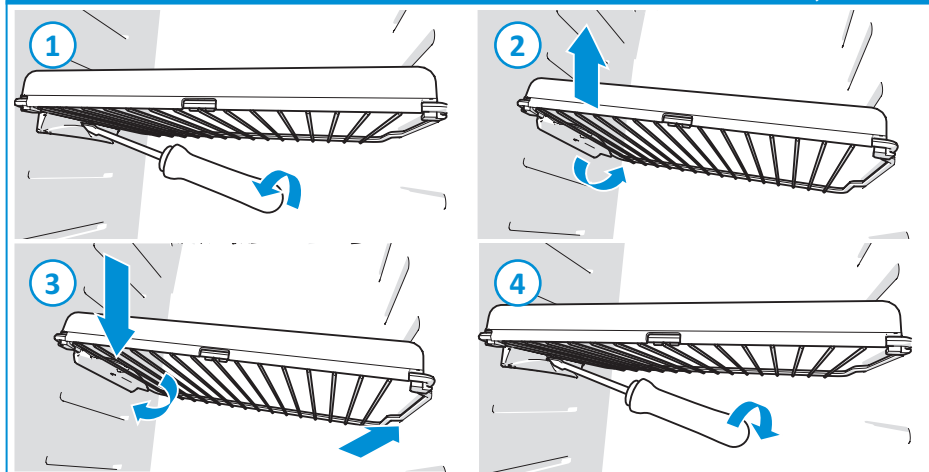
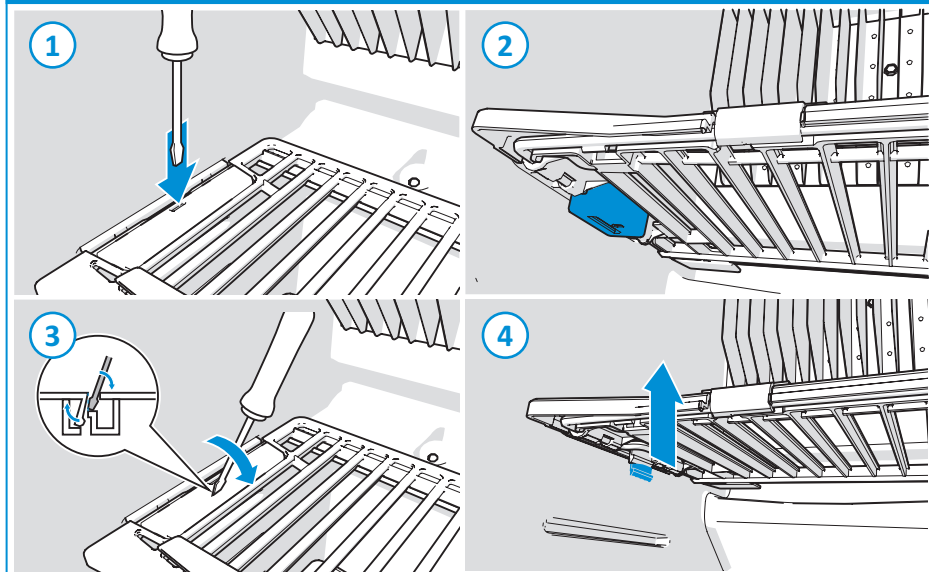


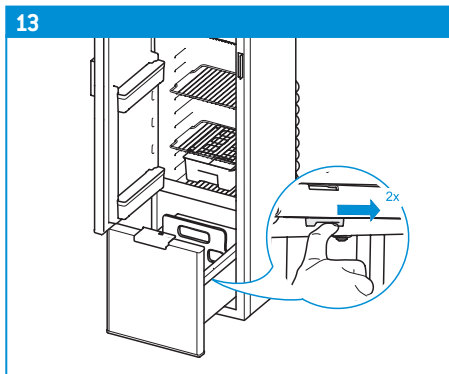
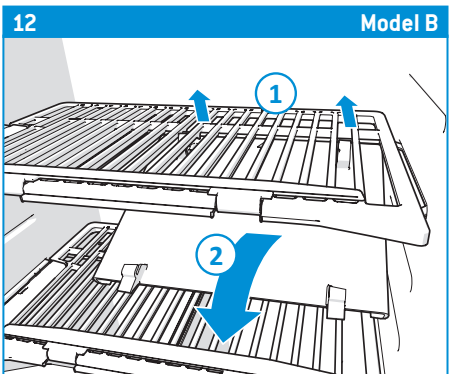
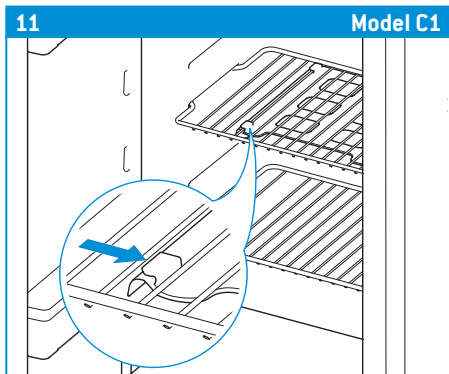
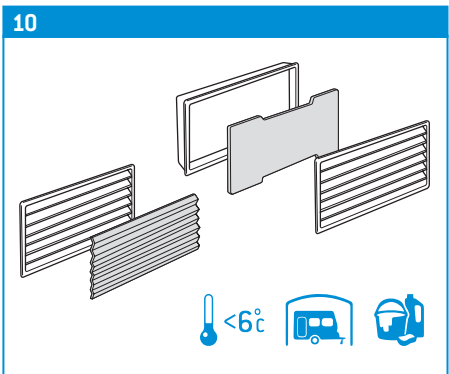
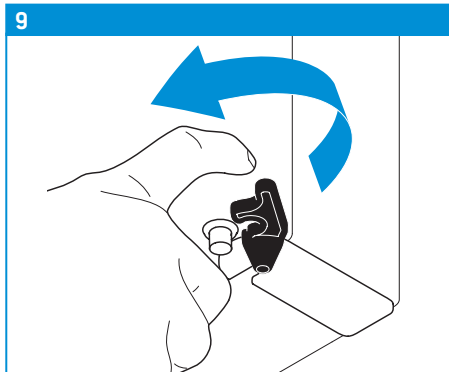
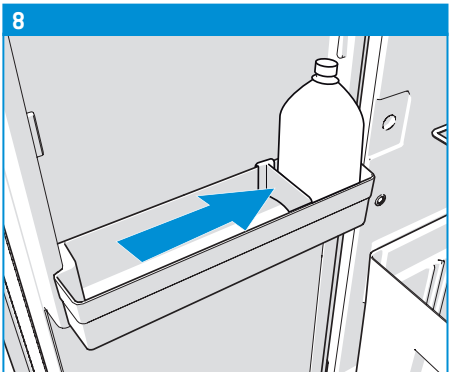
4 LED



5 LCD







EN

Original User Manual

Contents

1	Introduction.....	2
2	Safety.....	3
3	Overview.....	7
4	Before use.....	8
5	Use.....	9
6	Maintenance and cleaning.....	13
7	Disposal.....	15
8	Technical specifications.....	16
9	Service & questions.....	16

1. Introduction

General

This is the user manual for your Thetford refrigerator.

Read the safety instructions and information on use and maintenance of the refrigerator carefully before continuing. This will enable you to use the refrigerator safely and efficiently. Retain this manual for future reference.

This document is version 691829/0424-V07 of the user manual. Please visit www.thetford.com for the most recent version.

Symbols

The following symbols may be used in this manual:



Warning. Risk of serious injury and/or damage.



Caution Risk of moderate injury and/or damage.



Attention. Important information.



Note. Additional information.



Video. Additional instruction video available.

2. Safety

The Thetford N4000 series is a range of absorption refrigerator suitable of running on running on three different power sources; gas, 12V, and 230V. The refrigerator automatically selects the best power source.

Please read the safety instructions carefully before using the appliance.

Children and vulnerable people



Risk of serious injury through burns, explosion, suffocation, electrocution, fire and poisoning or damage to the appliance.

- This appliance may be used by children aged 8 years or older and persons with reduced physical, sensory or mental capabilities and/or lack of experience and knowledge only if they are supervised or have been given instructions on the safe use of this appliance and understand the potential hazards.
- Keep children younger than 8 years away from the appliance, except under constant supervision.
- Do not allow children to play with the appliance. Children can become trapped and possibly suffocate.
- A number of shelves and drawer dividers are secured to prevent inadvertent entrapment and possible suffocation of children. Do not remove or reposition them.
- Do not allow children to clean or maintain this equipment unattended.

Use of the appliance



Risk of health issues or damage to the appliance.

- Use the appliance for cooling and keeping frozen food frozen only and not for anything else. Follow the instructions in this manual. The manufacturer cannot be held liable for damage resulting from improper use or incorrect setting of the controls. If the instructions have not been followed, warranty claims will not be accepted.
- Do not use electrical devices in the appliance.
- Never expose the appliance to moisture and/or rain.
- Do not use the drawer as a step or ladder.
- Keep ventilation openings, in the appliance enclosure or in the built-in structure, clear of obstruction.

- Make sure the awning is well air ventilated, when refrigerator vents are located inside awning.
- Do not store explosive substances such as aerosol cans with a flammable propellant in this appliance.
- Never keep carbonated liquids in the frozen food compartment.
- Never eat ice-cubes or popsicles directly out of the frozen food compartment. This can cause burns.
- Keep flammable material away from the refrigerator.



General use

- This appliance is connected to more than one source of energy.
- This appliance is intended for use in mobile leisure vehicles.
- This appliance is suitable for camping use.
- Actual energy consumption of the refrigerator depends on the cooling setting, ambient temperature, and the content of the refrigerator.



Use of food

- To prevent your refrigerator from ice formation, always cover liquid products, let warm products cool down before placing them and do not open the door any longer than necessary.
- Only store food items in the refrigerator which are wrapped or packed.
- Opening the door for long periods can cause a significant increase of the temperature in the compartments of the appliance.
- Two-star frozen-food compartments are suitable for storing pre-frozen food, storing or making ice-cream and making ice cubes.
- One-, two- and three-star compartments are not suitable for the freezing of fresh food.
- Respect the expiry date printed on the packaging of food.
- Defrosting, cleaning or maintenance of the refrigerator can shorten the preservability of food.
- As the constant regulation of temperature can not be guaranteed, the refrigerator might not be suitable for proper storage of medications. Refer to the instructions included with the medications.

Maintenance and cleaning



Risk of serious injury through and electrocution or damage to the appliance.

- Before carrying out any kind of maintenance or cleaning on the refrigerator, switch it off, disconnect the AC and DC power sources, and close the regulator on the gas bottle.

- Do not use mechanical devices or other means to accelerate the defrosting process, other than those recommended by the manufacturer.
- Do not use abrasive cleaners, metal scouring pads or hard brushes. They could damage the refrigerator.
- Never clean the refrigerator with soap or aggressive, caustic or soda-based cleaning agents.
- Only for maintenance purposes it is allowed to remove a secured storage shelf or secured drawer divider. Always replace and secure the storage shelf or drawer divider to the exact same installation position after maintenance.
- Do not expose the refrigerator to water. Water through the vents may damage your refrigerator.
- The loose parts of the refrigerator are not suitable for the dishwasher.

Servicing and troubleshooting



Risk of serious injury through burns, explosion, suffocation, electrocution, fire and poisoning or damage to the appliance.

- Do not modify the appliance and its components, unless the modification is authorised by the manufacturer.
- All servicing must be carried out by an approved competent person, according local regulations.
- Make sure that installation, electrical connection and maintenance of the gas system will be done by a qualified technical person, according to the national legislation in force.
- Never attempt to repair parts of the gas system, the gas flue or electrical components by yourself. The repairs may only be done by a qualified technician. Please contact the Customer Service Department for further support and addresses.
- Let a qualified person perform a yearly inspection of the gas system, the burner area and the combustion seal to repair any damages or malfunctions.
- Use only parts supplied by the manufacturer.
- Do not change or adjust anything on the appliance, unless the change is authorised by the manufacturer or its representative.
- Never open or damage the refrigerant circuit of the cooling system at the back or on the inside of the appliance. The cooling system is pressurised and contains flammable substances
- Never open or damage the refrigerant circuit of the cooling system at the back or on the inside of the appliance. The cooling system is pressurised and contains substances that can be harmful to your health.
- If you smell a pungent odour from the cooling system: Switch off the refrigerator, extinguish any naked flames, provide sufficient ventilation through vents, windows and doors. Then contact the Customer Service Department in your country or holiday location.

Electricity



Risk of serious injury through electrocution, burns and fire or damage to the appliance and the surrounding.

- When positioning the appliance, ensure the supply cord is not trapped or damaged.
- If a supply cord is damaged, have it be replaced by the manufacturer, its service agent or similarly qualified person in order to avoid a hazard.
- Do not locate multiple portable socket-outlets or portable power supplies at the rear of the appliance.

Gas



Risk of serious injury through burns, explosion, suffocation and poisoning or damage to the appliance and the surrounding.

- While driving, it is only allowed to run the refrigerator on gas if the vehicle is equipped with a safety closing device according to the local regulations in force.
- If you smell gas: Directly close the valve of the gas bottle, extinguish any naked flames, do not switch on any electrical devices or lighting, open the windows and leave the room. Then contact the Customer Service Department in your country or holiday location.
- Do not use the refrigerator on gas when vehicle is located indoors.
- A filter must be used when operating on Liquefied Petroleum Gas (LPG). The filter must be prescribed by a qualified technical person.
- The refrigerator only runs on liquid gas (propane, butane or a mixture of these both). It does not run on natural gas or coal gas.
- Only use gas which is mentioned on the serial label inside the refrigerator.
- Make sure the type and position of the gas bottle meets the latest technical regulations.
- Change the gas bottle in open air and out of reach of any possible source of ignition.
- Never obstruct the ventilation openings in the gas bottle storage location.
- Do not use gas to power the refrigerator in the vicinity of petrol stations.

Storage



Risk of damage to the appliance due to flooding and moisture.

- Make sure the gas taps of the gas bottle are closed during storage.
- Water flowing through the outside vents can damage the refrigerator. Make sure the vent openings are covered before washing the vehicle before stalling.
- To prevent mould from forming in the appliance take care before storage; switch off the appliance, defrost it, clean it, dry it and leave the door open.

Environmental



The refrigerant is ammonia and insulation blowing gases is cyclopentane (C5H10), servicing and disposal of appliance should be done by qualified person.



When the vehicle is exposed to full sun light, it is strongly recommended to apply proper ventilation in the vehicle to reduce energy consumption.

3. Overview

See images 1 to 5 and for a visual reference.

(1.) Model A	(2.) Model B	(3.) Model C1 & C2
1. LED control panel or LCD touchscreen	1. LED control panel or LCD touchscreen	1. LED control panel or LCD touchscreen
2. Battery pack hatch	2. Frozen food compartment	2. Frozen food compartment
3. Door lock	3. Battery pack hatch	3. Cooling fins
4. Frozen food compartment	4. Cooling fins	4. Door lock
5. Cooling fins	5. Fresh food compartment	5. Storage shelves
6. Fresh food compartment	6. Storage shelves	6. Shelf food retainer (optional)
7. Vegetable bin	7. Slide-out box (optional)	7. Drawer divider (optional)
8. Security lock (not present on all refrigerators)	8. Shelf food retainer	8. Drawer for bottles and vegetables
9. Storage shelves	9. Vegetable bin	9. Door bins
10. Serial ID label	10. Security lock (not present on all refrigerators)	10. Slide-out box (optional)
11. Door bins	11. Serial ID label	11. Fresh food compartment
12. Bottle retainer	12. Door bins	12. Serial ID label
13. Refrigerator door	13. Bottle retainer	13. Frozen food compartment door
14. Frozen food compartment door	14. Refrigerator door	14. Refrigerator door
	15. Door lock	15. Battery pack hatch
	16. Frozen food compartment door	

(4.) LED control panel

1. On/off button
2. Confirmation button
3. Arrow buttons
4. Energy sources
5. Cooling level indicators
6. Anti-condensation
7. Battery empty (optional)

(5.) LCD touchscreen

1. On/off button
2. Energy source button
3. Cooling level button
4. Anti-condensation button
5. Error code

4. Before use



Read the applicable instructions in chapter Safety first.

Before using the appliance:

- Ensure that all packaging materials have been removed.
- Clean the appliance with warm water and household detergent and dry carefully with a soft cloth.
- Ensure that the DC/AC electricity supply is connected and turned on.
- Ensure that the gas supply is connected and turned on.



The refrigerator has a CI-bus option and can be connected to a compatible central vehicle display (if available and installed by the RV manufacturer).



To improve the cooling performance of your refrigerator in high temperatures, Thetford advises to install the Ventilator Kit. It helps to detract the warm air quicker to the vents. The Ventilator Kit is suitable for all Thetford refrigerators.

Energy sources

There are four available functions:



Automatically selects the desired source

- The control panel shows the A and the best source available.



230V – Mains

- This refrigerator is equipped with electronics to ensure optimal cooling performances at all input voltages between 210 V and 250 V.



12V – Battery of the vehicle

- Operating on 12V is only effective while the engine of the vehicle is running.
- The performance of the refrigerator when operating on 12V is dependent on the thickness and length of the wiring and the overall installation of the (towing) vehicle.
- In case the refrigerator is installed in a caravan, the refrigerator needs a D+ signal (engine running) from the towing vehicle to operate in DC mode while travelling.
- The Recreational Vehicle manufacturer can choose to shut off the 12V option as an energy source.



Gas – Gas connection of a gas bottle

- When using gas, make sure the gas bottle valve is opened.
- Make sure the control panel is powered from the battery or AA batteries (in the case of a stand-alone model).
- When selecting gas, the flame should be ignited within 30 seconds. If the system fails, restart the refrigerator and select the gas source again. For safety reasons, you cannot run the refrigerator on gas within 15 minutes of parking the vehicle.
- From about 1000m above sea level, problems of a physical nature can occur when lighting the gas. This does not mean that the refrigerator is not working properly.

5. Use



Read the applicable instructions in chapter Safety first.

Settings

See images 4 and 5 for a visual reference.

Switch on (LED)

Switch on (LCD)



For optimal performance, level your vehicle and switch on the refrigerator 8 hours before placing food.

1. Push the on/off button (1) and hold it for 1 second. The light in the on/off button turns blue and the last selected settings will light up.
1. Push the on/off button (1). The on/off button turns blue and the last selected settings are shown on the display.

Select energy source (LED)

Select energy source (LCD)



Allways use the gas connection or 230V to start up and cool.

2. Push the confirmation button (2) and hold it for 2 seconds until the energy source symbols start to blink.

3. Push the arrow buttons until the desired sources is selected. For more information on available sources, see chapter Energy sources.

4. Push the confirmation button with quick touch (press and let go) to confirm your selection.



If you do not confirm, after 10 seconds the lights will dim and the selected settings will not be saved.

2. Push the energy source button (2) several times until the desired source is selected. For more information on available sources, see chapter Energy sources.

Select cooling level (LED)

Select cooling level (LCD)



We advise to set the refrigerator on cooling level 3, with an ambient temperature between 15 °C and 25 °C.

5. Push the confirmation button (2) and hold it for 2 seconds until the source symbols start to blink.
6. Push the confirmation button again. The cooling level indicators start to blink.
7. Push the arrow buttons (3) to select the desired cooling level.
8. Push the confirmation button to confirm your selection. Your control panel should now confirm, and turn off, leaving a blue light in the on/off button.



If you do not confirm, after 10 seconds the lights will dim and the selected settings will not be saved.

3. Push the cooling level button (3) (several times) until the desired cooling level is selected.

Operating options

See images 1, 2 and 3 for a visual reference.

Batteries empty (N4000-E+ series, stand-alone model)



Do not use rechargeable batteries for this function of the refrigerator.



Stand alone models can be equipped with a LED+ control panel that is only functional when the control panel is powered.



A stand-alone model (installed by the RV manufacturer) is operational using 6 × 1.5V AA/LR6 batteries in the event of no mains or battery.

The refrigerator will run on batteries for approximately 7 days in combination with gas supply. When the red symbol 'batteries empty' blinks, you must replace the batteries within 24 hours.



If you are not going to use this function for more than two weeks, remove all batteries.

See images 2, 3, 4 and 5 for a visual reference.

Anti-condensation (LED)

Anti-condensation (LCD)



To prevent the control panel from condensation, the anti-condensation function is automatically switched on. Only switch off this function when there is little energy. To switch off the function:

- | | |
|--|--|
| <ol style="list-style-type: none">1. Press the arrow buttons (3) simultaneously and hold them for 2 seconds. The symbol 'anti-condensation off' lights up on the control panel.2. Press the arrow buttons simultaneously and hold them for 2 seconds to switch on the anti-condensation function again. | <ol style="list-style-type: none">1. Push the anti-condensation button (4). The symbol on the control panel will light up.2. Push the button again to switch on the anti-condensation function again. |
|--|--|

Use of the fresh food compartment



The maximum load of the large shelf is 12 kg and the maximum load of the small shelf is 6 kg.



The maximum storage capacity of the drawer is 15kg.

To organise your refrigerator as desired, the unsecured storage shelves, drawer dividers and door bins can be moved.



Ensure that the door can still be closed after reorganizing shelves and bins.

To reposition an unsecured storage shelf (model B only):

See image 6 for a visual reference.

- Place a tool with a flat end firmly inside the oval opening of the clip (1).
- Hold the block under the clip with your free hand (2).
- Gently move the tool away from the fridge wall (approximately 30 degrees) while keeping its end on the bottom of the oval opening (3).
- After removing the safety block, rotate the clip upwards to release the shelf (4).
- Move the storage shelf to the desired position.
- Rotate the clip downwards until the shelf snaps into place.
- Place the block at bottom of the shelf until you hear a click.

Use of the frozen food compartment

Use the frozen food compartment to store perishable foodstuffs or frozen foods for short periods.



The frozen food compartment temperature cannot be guaranteed if the refrigerator performs in a vehicle interior temperature below 10°C. Food might defrost.

While driving

See image 8 for a visual reference.

- Make sure no products in the refrigerator can move while driving. Secure the bottles in the door with the bottle retainer, bottles and large products in the drawer with drawer dividers and raise the shelf food retainers to hold the products on the shelves.
- Close the refrigerator door.



When you push to close the door of the refrigerator, the door locks automatically.

See image 9 for a visual reference.

- For models with a travel lock: secure the lock. The door lock will extra prevent the door from opening while driving.

Winter use

See image 10 for a visual reference.

- When you are going to use the refrigerator with an outside temperature below 6°C, install a suitable winter cover.



This cover will protect your refrigerator against too cold air and makes sure the refrigerator will still perform optimally.

- Make sure you remove the winter cover again once the temperature is above 6°C.

6. Maintenance and cleaning



Read the applicable instructions in chapter Safety first.

Clean

Thetford recommends an annual inspection service by an approved service centre. Clean the refrigerator on a regular basis for optimal performance.

- Always remove any spills or contamination immediately with a mild household cleaner and soft cloth.
- If needed, remove the shelves, door bins, vegetable bins and clean the inside of the refrigerator and loose parts.
- Clean the outside of the refrigerator with a damp soft cloth.



Make sure the vents on the outside of the vehicle are always dust-tight.

Replace a secured storage shelf

See image 7 for a visual reference.

- Remove the screw that is placed in the shelf near the shelf clamp (1).
- Turn the plastic clamps of the storage shelf upwards (2).
- Lift the left side a bit (2).
- Remove the storage shelf.

To replace the secured storage shelf after maintenance:

- Place right side (side without clamp) of the storage shelf in the refrigerator wall (3).
- Place the other side (with the clamp) in the corresponding groove.
- Turn the plastic clamp downwards (3).
- Replace the screw.

Remove a slide-out box system (model C1 and C2)

See image 11 for a visual reference.

To remove the slide-out box system:

- Completely open the fresh food compartment door and remove the slide-out box.
- Then slide the rail system to the right, as illustrated.
- Remove and clean the slide-out box system.
- After cleaning, place the system back in reverse order.
- Make sure the slide-out box system snaps into place.

Remove a slide-out box system (model B)

See image 12 for a visual reference.

To remove the slide-out box system:

- Completely open the fresh food compartment door and remove the slide-out box.
- Locate the two clips at the back of the rail system (1).
- Pull the clips upwards and forwards until they are released.
- Lower the front and slide the rail system further to the front (2).
- Remove and clean the slide-out box system.
- After cleaning, place the system back in reverse order until you hear a click. For left turning door, place the system into the slots on the right-hand side.
- Make sure the system locks into place.

Remove a drawer (model C1)

See image 13 for a visual reference.

To remove the drawer:

- Pull the drawer until the stop and push it a little bit back.
- Then push the guide locks backwards, as illustrated.
- Pull the drawer further to the front and lift the wheels over the curves.
- Remove and clean the drawer.
- After cleaning, pull out the guides until they snap into place.
- Place the drawer back in reverse order.

Storage

If you do not use the refrigerator for a longer period:

- Empty the refrigerator.
- Defrost the frozen food compartment.
- Clean the complete refrigerator thoroughly.
- Install the winter cover over the vents, to protect your refrigerator during storage.
- Keep the fresh food compartment door, as well as the frozen food compartment door, open during storage.

To keep the door open during storage:

See image 14 for a visual reference.

- Model A and B: Rotate the storage lock and secure it by using the strike plate.

See image 15 for a visual reference.

- Model C1 and C2: Rotate the storage lock.

To use the refrigerator after storage:

- Rotate the storage lock back to its original position.

Defrosting

A layer of ice on the cooling fins will decrease the cooling capacity and durability of your refrigerator. Therefore your refrigerator is provided with an automatic defrost system, which reduces ice formation.

It is also possible to defrost your refrigerator manually:

- Remove all food.
- Switch off the refrigerator and open the doors.
- Put a towel in the frozen food compartment and on the bottom of the fresh food compartment to catch any leakage water.

7. Disposal



Read the applicable instructions in chapter Safety first.

When your refrigerator has reached its end of life, dispose the product according to the local rules. Do not dispose the refrigerator with normal household waste.

Environmental Protection



Discarded electric appliances are recyclable and should not be discarded in the domestic waste. Please actively support us in conserving resources and protecting the environment by returning this appliance to the collection centres (if available).

8. Technical specifications

Refrigerator specifications

Model	Display	Total volume (L)*	Volume frozen food comp. (L)	Energy consumption (kWh/24h)	Energy consumption gas (g/24h)	Net weight (kg)
N4080	LED+	71	9.8	2.6	270	22.5
N4090	LED+ or LCD	78	10.8	2.9	300	22.5
N4141	LED+ or LCD	135	15.3	4.5	468	38
N4142	LED+ or LCD	137	15.3	4.5	468	37
N4145	LED+ or LCD	136	25.9	4.3	437	37
N4150	LED+ or LCD	145	27.4	4.3	437	37.5
N4170	LED+ or LCD	156	29.2	4.3	437	39
N4175	LED+ or LCD	165	30.7	4.3	437	39.5

**Total volume and energy consumption has been calculated according to IEC 62552-2020.*

9. Service & questions



Read the applicable instructions in chapter Safety first.

Service

Before any service work is started, disconnect the appliance from electrical supplies.

Troubleshooting

Problem	Possible cause	Solution
Refrigerator does not start	Refrigerator is not switched on	Switch on the refrigerator
	Vehicle is not level	Make sure the vehicle is level
		Try to start the refrigerator on another power source

Problem	Possible cause	Solution
Model with LCD display: Error codes 1, 2, 4, 5, 8, 9, 12 or 13 light up on the control panel	Multiple causes	Switch the refrigerator off and on again. If the problems still exist, contact a service centre
Error code 3 Refrigerator does not work on gas	Gas bottle is empty	Replace the gas bottle
	The valve of the gas bottle and/or the shut-off valves are closed	Open the valves
	Refrigerator is not switched on	Switch on the refrigerator
		Try to run the refrigerator on another power source
Error code 6 or 7 Refrigerator does not work on 12V	The engine is not running	Make sure the engine is running
	12V fuse faulty	Check if the 12V fuse in the fuse box of your motor home or car is still operational
		Try to run the refrigerator on another power source
Error code 10 Refrigerator does not work on 230V	Mains are not available	Check if the mains is available
		Try to run the refrigerator on another power source
Error code 11 Refrigerator does not work in Auto	Sources are not connected	Connect the sources
		Try to run the refrigerator on another power source manually
Error code 18: All symbols light up		Wait a few seconds until the refrigerator starts normally
All lights are blinking		Switch the refrigerator off and on again. If the problems still exist, contact a service centre

Declaration of Conformity

Thetford hereby declares that this product is in compliance with the essential requirements and other relevant provisions of the applicable Directives and Standards. A copy of the Declaration of Conformity can be found at www.thetford.com.

EUROPEAN HEADQUARTERS

Thetford B.V.
P.O. Box 169
4870 AD Etten-Leur
The Netherlands

T +31 76 504 22 00
F +31 76 504 23 00
E info@thetford.eu

UNITED KINGDOM

Thetford Ltd.
Unit 6
Brookfields Way
Manvers, Rotherham
S63 5DL, England
United Kingdom

T +44 844 997 1960
F +44 844 997 1961
E info@thetford.eu

GERMANY

Thetford GmbH
Schallbruch 14
D-42781 Haan
Deutschland

T +49 2129 94250
F +49 2129 942525
E info@thetford.eu

FRANCE

Thetford S.A.R.L.
Parc BUROPLUS / Bâtiment 6
18, Boulevard de la Paix
CS 80008
95895 Cergy Pontoise Cedex
France

T +33 1 30 37 58 23
F not available
E info@thetford.eu

ITALY

Thetford Italy c/o Tecma s.r.l.
Via Flaminia
Loc. Castel delle Formiche
05030 Otricoli (TR)
Italia

T +39 0744 709071
F +39 0744 719833
E info@thetford.eu

SPAIN AND PORTUGAL

Mercè Grau Solà
Agente para España y Portugal
C/ Castellet, 36 bxs 2a
08800-Vilanova i la Geltrú
Barcelona
España

T +34 938 154 389
F not available
E info@thetford.eu

SCANDINAVIA

Thetford Scandinavia
Bangatan 6
521 43 Falköping
Sverige

T +46 31 336 35 80
F not available
E info@thetford.eu

AUSTRALIA

Thetford Australia Pty. Ltd.
130-132 Freight Drive
Somerton VIC 3062
Australia

T +61 3 9358 0700
F not available
E info@thetford.com.au
www.thetford.com.au

CHINA

Thetford China
Rm. 1207, Coastal Building
(East Block)
Haide 3rd Road, Nanshan District
Shenzhen, 518054
China

T +86 755 8627 1393
F +86 755 8627 1673
E info@thetford.cn
www.thetford.cn