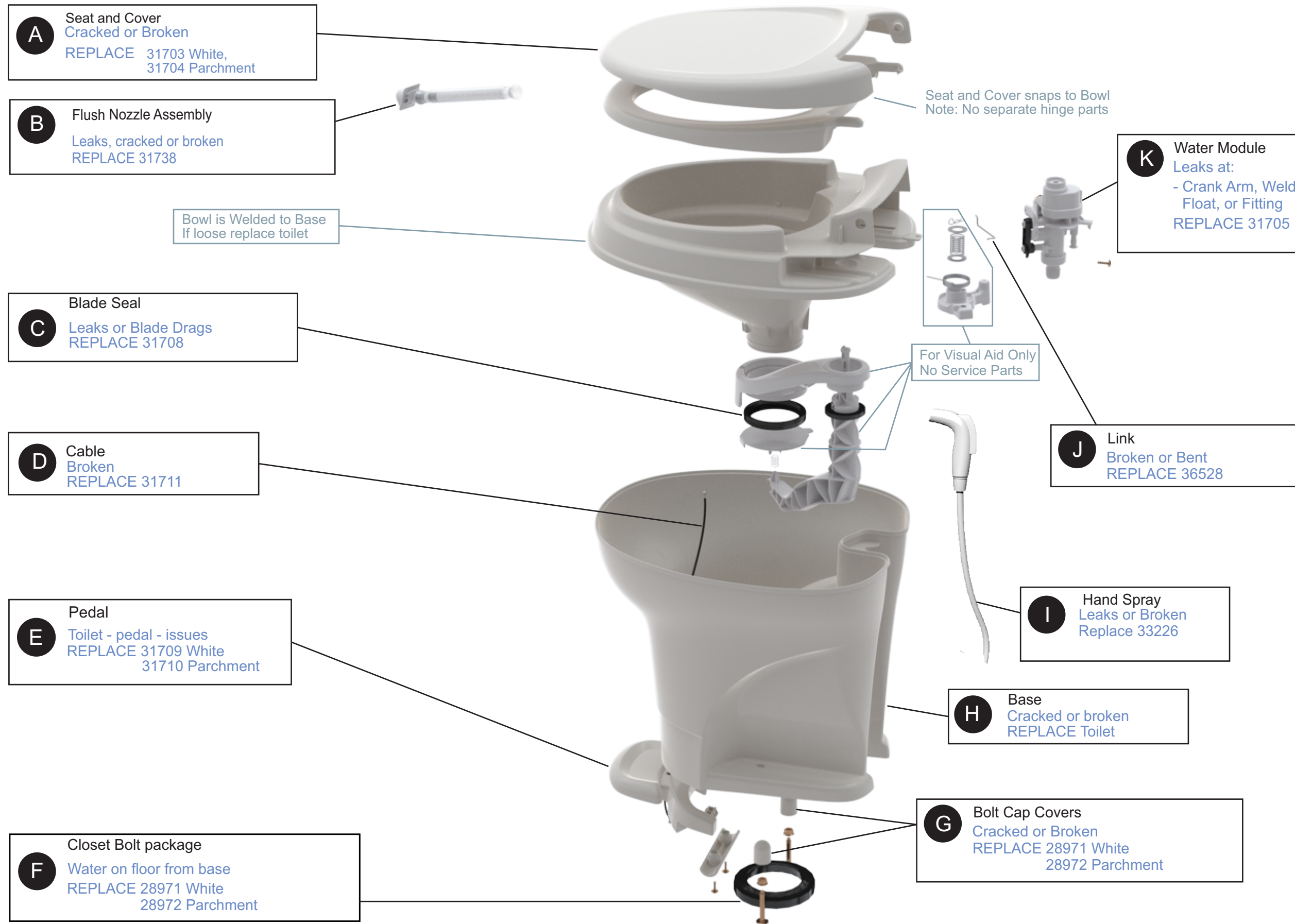


AM V Hi Pedal Flush Toilet 31,600 - 31,799



A Seat and Cover
Cracked or Broken
REPLACE 31703 White,
31704 Parchment

B Flush Nozzle Assembly
Leaks, cracked or broken
REPLACE 31738

Bowl is Welded to Base
If loose replace toilet

C Blade Seal
Leaks or Blade Drags
REPLACE 31708

D Cable
Broken
REPLACE 31711

E Pedal
Toilet - pedal - issues
REPLACE 31709 White
31710 Parchment

F Closet Bolt package
Water on floor from base
REPLACE 28971 White
28972 Parchment

Seat and Cover snaps to Bowl
Note: No separate hinge parts

K Water Module
Leaks at:
- Crank Arm, Weld Seam
Float, or Fitting
REPLACE 31705

For Visual Aid Only
No Service Parts

J Link
Broken or Bent
REPLACE 36528

I Hand Spray
Leaks or Broken
Replace 33226


H Base
Cracked or broken
REPLACE Toilet

G Bolt Cap Covers
Cracked or Broken
REPLACE 28971 White
28972 Parchment

Key #	Part #	Description
A	31703	Seat and Cover - White
	31704	Seat and Cover - Parchment
B	31738	Flush Nozzle Assembly
C	31708	Blade Seal
D	31711	Cable
E	31709	Pedal - White
	31710	Pedal - Parchment
F	31713	Closet Bolt Package - White
	31724	Closet Bolt Package - Parchment
G	31713	Closet Bolt Package - White
	31724	Closet Bolt Package - Parchment
I	33226	Hand Spray
J	36528	Link
K	31705	Water Module

Note: Odor problems
- Make sure Bowl holds water

- Make sure vent pipes to
Holding Tank are not blocked

	PART NUMBER L-1725	TITLE AM V Hi Pedal Customer Support Illustration		
	PRINTED MATERIAL	DRAWING DATE 12 July 2011	DRAWN BY TGC	CHECKED BY GG

THIS DRAWING IS THE CONFIDENTIAL AND EXCLUSIVE PROPERTY OF THETFORD CORPORATION AND MAY NOT BE COPIED, DUPLICATED OR USED FOR ANY PURPOSE NOT AUTHORIZED BY THETFORD CORPORATION.

REV	DESCRIPTION OF CHANGE	DT	ECN	DRAWN BY	CHECKED BY	DATE
A	RELEASED		13809	TGC	GG	3AUG11

- NOTES:
1. THIS TITLE BLOCK IS A COPY OF THE MASTER TILE BLOCK.
REFER TO PDM LINK FOR MASTER TITLE BLOCK INFORMATION.
 2. HARD COPY _____ OF 20